

From The Finance Team

As we approach the end of another school year, hopefully experience more seasonally appropriate Spring weather, and look forward to summer vacations, it is a good time to reflect on the past year, plan for the next year, and count our blessings.

According to a study released on April 24th, 2026, by Faith Communities Today, church attendance, volunteering, and giving have increased since the COVID-19 Pandemic for the first time during the twenty-five years that the organization has been tracking this information. People, especially young adults, have been evaluating their situations and looking for meaning and connections in their lives.

During this past fiscal year (beginning July 2025) our church attendance, volunteering, and giving have grown here at LLUMC. It is wonderful to see new people joining our church community and getting involved in worship, service, and study!

We are blessed with a wonderful worship team. We are fortunate to have our souls stirred each week by Dave, a world-class pianist who shares his music and leads the choir and bells; Pastor Ian, who is a scholar and an inspiration; and Missy, our new Director of Children & Youth Ministries, who is an intellect, artistic talent, and is excited to share her love for the Lord with the rest of us. Our audio-visual team also wonderfully provides us with the opportunity to view services when we are not available to attend services in person.

In the Methodist tradition, we have the opportunity to participate in small groups during the week between church services: Adult Bible studies, Vacation Bible School, Methodist Youth Fellowship, Prayer Team, Men of Joy (Men's Group), Women on Wednesday (Woman's Group), Projects and Prayers, and we are looking forward to having more informal groups formed based on interests, careers, stages of life, etc.

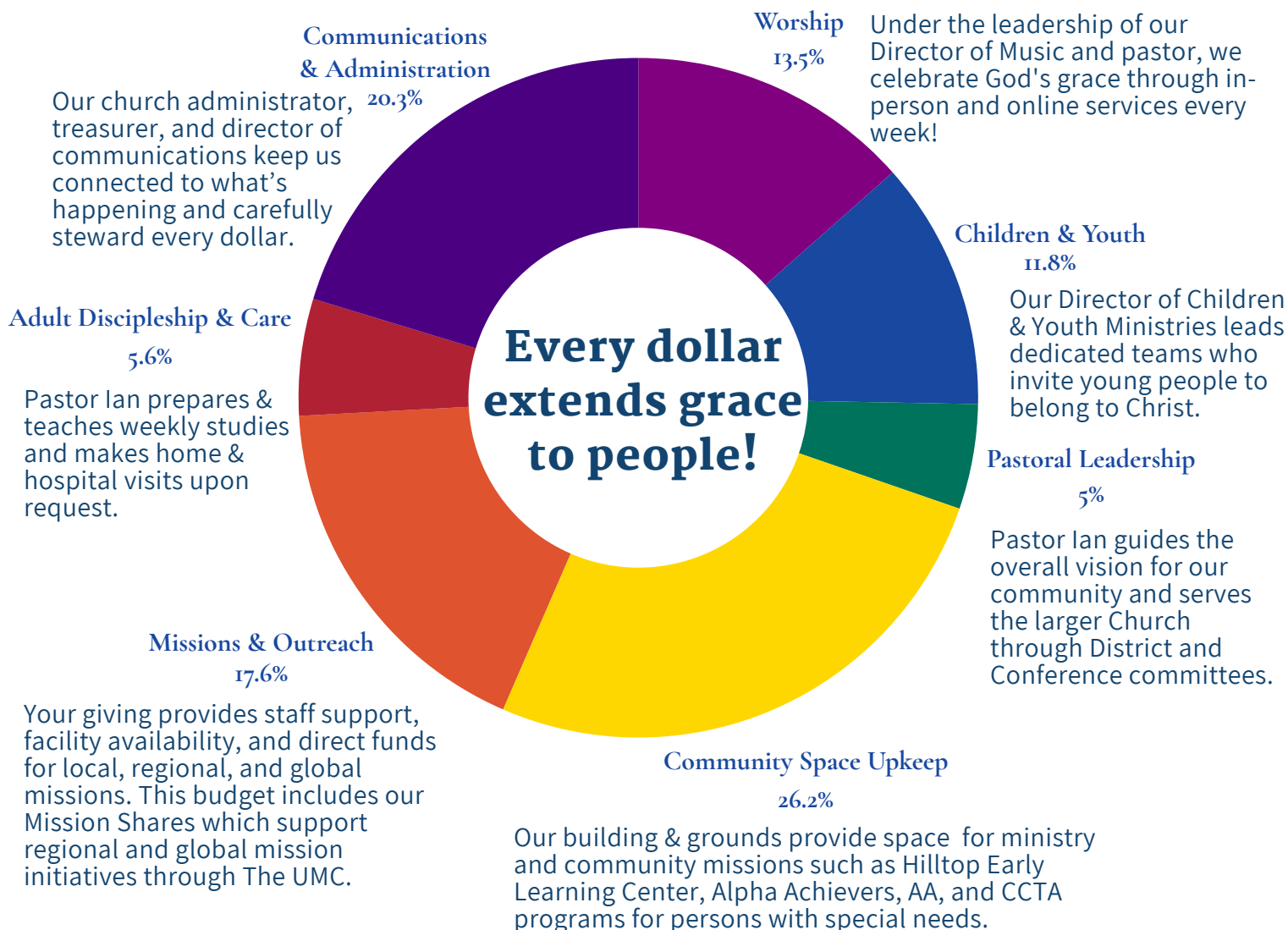
Outreach groups have provided food and clothing and assisted with housing for those in need through the Ruth M. Kirk Center, Grassroots Crisis Intervention, and the Appalachia Service Project.

Our facilities also host community groups such as the Hilltop Early Learning Center, Alpha Achievers (promoting academic excellence, leadership and community service among high school-aged African American males), Alcoholics Anonymous, and the Columbia Center for Theatrical Arts.

On behalf of the LLUMC Finance Committee, we thank you for your generous tithes and offerings to support our community, pay our staff, and maintain our church home!

Jim Wesloh, Finance Committee Chairperson

Like your family budget, our church's spending report is the most tangible expression of what we believe and value. With every gift, your beliefs become tangible expressions of God's grace. Look at how every dollar in the offering plate is used by our staff and ministry leaders!



Year-To-Date Financial Update

Thank you for your generosity! LLUMC is on track to end our fiscal year without a financial shortfall for the second consecutive year. This follows three lean years. After wonderful Christmas & Easter celebrations, the General Fund is where it needs to be to carry us through the typically-leaner Summer season. Your Finance Team & Staff have worked diligently to find areas of cost savings which resulted in expenditures only increasing by 1.5% year-over-year compared to a national inflation rate of 2.36%. In addition, your giving has been growing steadily over the past two years allowing LLUMC to budget for long-deferred maintenance & safety projects and maintain a robust staff team! As we continue to battle inflationary pressures and seek to expand our place as a center of the Greater Clarksville community, your generosity continues to be appreciated and we are grateful for your dedication to the ministries of LLUMC.

Fiscal Year Finances At-A-Glance

7/1/2025 - 3/31/2026	Actual	Budget
Tithes and Offerings	\$563,970	\$539,989
Building Use	\$54,675	\$53,750
Interest Income	\$3,309	\$3,826
Total General Fund Income	\$621,954	\$597,565
Total General Fund Expenses	\$501,446	\$507,496
Net Income (Loss)	\$120,508	\$90,070
Restricted Funds - 7/1/2025 - 3/31/2026		
Restricted Income		\$75,101
Total Restricted Expenses		\$100,709
Restricted Income (Loss)		\$(25,608)

A Look Back: 2025-2026 Ministry By The Numbers

Our 2025-2026 Program Year has been an incredible year for the mission & ministry at Linden-Linthicum UMC - and there are still two months to go! Because of God's grace and your financial faithfulness with your resources, together we have been able to share the Good News of Jesus, feed & clothe our neighbors, and transform lives! Check out our ministry year by the numbers.



18%

Increase in average Worship attendance



48

Children involved in Sunday School, Youth Group, VBS, and Holiday Events



85

Adults in Bible Studies & Small Groups



5

Persons welcomed into the Body of Christ through Baptism



13

New Members of LLUMC



1000+

Pounds of food collected through our Holiday Food Drive



140

Christmas Toys collected & wrapped for families in need



100+

Coats collected for our neighbors in Baltimore this Winter



1600

Servings of food prepared and donated to Grassroots & Cold Weather Shelter

WHO ARE WE? WHO IS GOD CALLING US TO BECOME?

A LOOK TO THE FUTURE

CHURCH COUNCIL > A NEW MISSION & VISION FOR THE CONGREGATION

This year your Church Council has been hard at work planning for the future of LLUMC. This process began in the Fall with an evaluation of our campus, programs, and outreach. This Spring we crafted Mission & Vision statements to name who we are and who we have discerned God is calling us to be!

Our Mission:

The mission of LLUMC is to become like Jesus through Worship, Christian Education, and Service to our community.

Our Vision:

The vision of LLUMC is to become Greater Clarksville's community church where every individual is invited and equipped to become like Jesus.



MISSION HIGHLIGHT >

CHRISTIAN ED. GETS NEW DIRECTOR

This March we welcomed Missy Smith as our Director of Children & Youth Ministries! Missy brings with her a wealth of experience in curriculum

design, hands-on outreach, and ministry with young people. As we commit to our mission of becoming like Jesus through Christian Education, Missy has hit the ground running with encouraging Children's Messages in worship, planning opportunities for students to learn and grow, and meeting with our young people and their parents to hear their hopes and dreams for the Children & Youth program! It is our hope that each and every young person is able to be invited and equipped to become like Jesus with us at LLUMC!

Want to help? Contact Missy at
missy@L-LUMC.org

VISION HIGHLIGHT >

FOSTERING COMMUNITY: FOOD TRUCK THURSDAYS

Meet your neighbors, support local businesses, and get some great food every Thursday 5-8pm at LLUMC! By opening our campus to local food trucks & the community, LLUMC is seeking to become a place where everyone in Greater Clarksville experiences a sense of welcome, belonging, and fellowship!



Vacation Bible School (VBS) 2026

July 6 - 10
6:00 - 8:30pm

Registration Now
Open at L-LUMC.ORG



YOUR PLEDGE: PART OF THE JOURNEY OF DISCIPLESHIP

In the Methodist tradition, we believe that everything we have comes from God - our life, our time, our skills & talents, and our material resources! As disciples, we respond to God's generosity toward us by responding in gratitude and learning to be generous with all that God has given us for the sake of God's mission. We strive to use our talents to glorify God, use our time in ways that help our neighbor, and use our money in ways that advance the Gospel.

For Methodists, our tithes and offerings aren't just institutional funding - they are part of our discipleship. As we read in the New Testament, we are able to love because God first loved us (1 John 4:9) and we become more like Jesus as we imitate the love we have received. Likewise, God has also shown himself to be exceedingly generous - freely giving us all that we have! - and so we, in return, learn to imitate that generosity by freely giving back to him. Just as we cooperate with God's grace through worship, study, and service in order to sanctify all aspects of our lives, giving is another of these means of grace which God uses to sanctify our budgets and earthly priorities.

Each year we ask the congregation to fill out an estimate of giving card and offer it up as an act of worship. This is a tangible way to set aside the first-fruits of our labor to be dedicated to God and the mission of his Church. Before anything else, your estimate of giving card and your generosity throughout the year are acts of faith - embodied confessions of our priorities and beliefs.

For most of us, giving - as with all aspects of discipleship - is a journey. Consider where you are in your financial discipleship this year and consider taking the next step in faith.

Stepping Stones to Generosity

1. Start The Journey

Begin by making the decision to give a set amount every week or month.

2. Grow in Faith

Give a percentage of your income and set up recurring giving to make God first in your monthly spending.

3. Commit to God

Give a tithe (10%), the Church's benchmark for financial faithfulness.

4. Celebrate God's Blessings

If God has been exceedingly gracious to you, give beyond a tithe!

PRAY

Prayerfully and bravely consider your financial blessings and the portion God is calling you to return to him in the 2026-2027 program year.

Responding to God's Grace

PLEDGE

Make a commitment to God to give every month. Share your confidential pledge with the church using the card provided.

GIVE

Make a plan for how you will keep your promise. Convenient and secure giving options are on the back cover.

Each of you should give what you have decided in your heart to give, not reluctantly or under compulsion, for God loves a cheerful giver.
2 Corinthians 9:7

Maximize Your Gift

Would giving through stocks, IRAs, insurance policies, or other financial instruments maximize your giving potential and your tax advantage? Could you make a lasting impact through a legacy gift to our Endowment Fund? More information on these giving options is available by emailing the office at LLUMC@l-lumc.org or visiting our Giving page at www.l-lumc.org/giving.

Why Linden-Linthicum?

Missy Smith, Director of Children & Youth Ministries

When I first visited LLUMC, I saw a church building with mid-century modern appeal. The structure seemed new, but the congregation and the story therein, timeless. I saw youth and elders, full pews, and a passionate music ministry. As I walk into this new role, I am certain that I will not be alone in helping the youth program to be a meaningful entryway into a life of discipleship and action. While some congregations struggle to stay afloat, LLUMC is thriving under God's direction. Every day I learn about new ways that we are a body of believers ready to share God's handiwork in this community and beyond; outreach, ASP, Projects & Prayers, Bible Study - the list is long and the impact is deep. LLUMC is a church of doers. For that, I am thankful.



HOWEVER YOU CHOOSE TO GIVE,

Thank you for giving!

If putting your gift in the offering plate each Sunday or mailing your gift to the church works for you, stick with that plan!

If you have gone digital with your finances, we encourage you to establish a recurring electronic gift. These are safe and convenient ways to stay faithful.



To establish or increase your recurring electronic gift or to give online, visit www.L-LUMC.org and click “Give” or use the QR Code below

ONLINE GIVING

You can give anywhere, anytime through our website. Click on 'Give' and select if you want to make a one-time gift or set up a recurring offering. Follow the simple steps to set up your account and donate securely through your bank account or credit card. You can choose to cover the processing fee or the church will cover it for you!

TEXT TO GIVE

Tired of your phone being primarily used to make you upset as you scroll through social media nonsense? Use it to worship God instead! Through our Text-To-Give service your phone can now be the means of supporting God’s mission. Just text 844-975-1961 with the dollar amount you want to donate as a number and follow the prompts!



Make or
modify an
online gift
to LLUMC



Please return your Generosity Pledge Card in the envelope provided during worship in May, through the mail, or visit www.L-LUMC.org to make your online pledge and/or offering.